

**SCHEDULE**

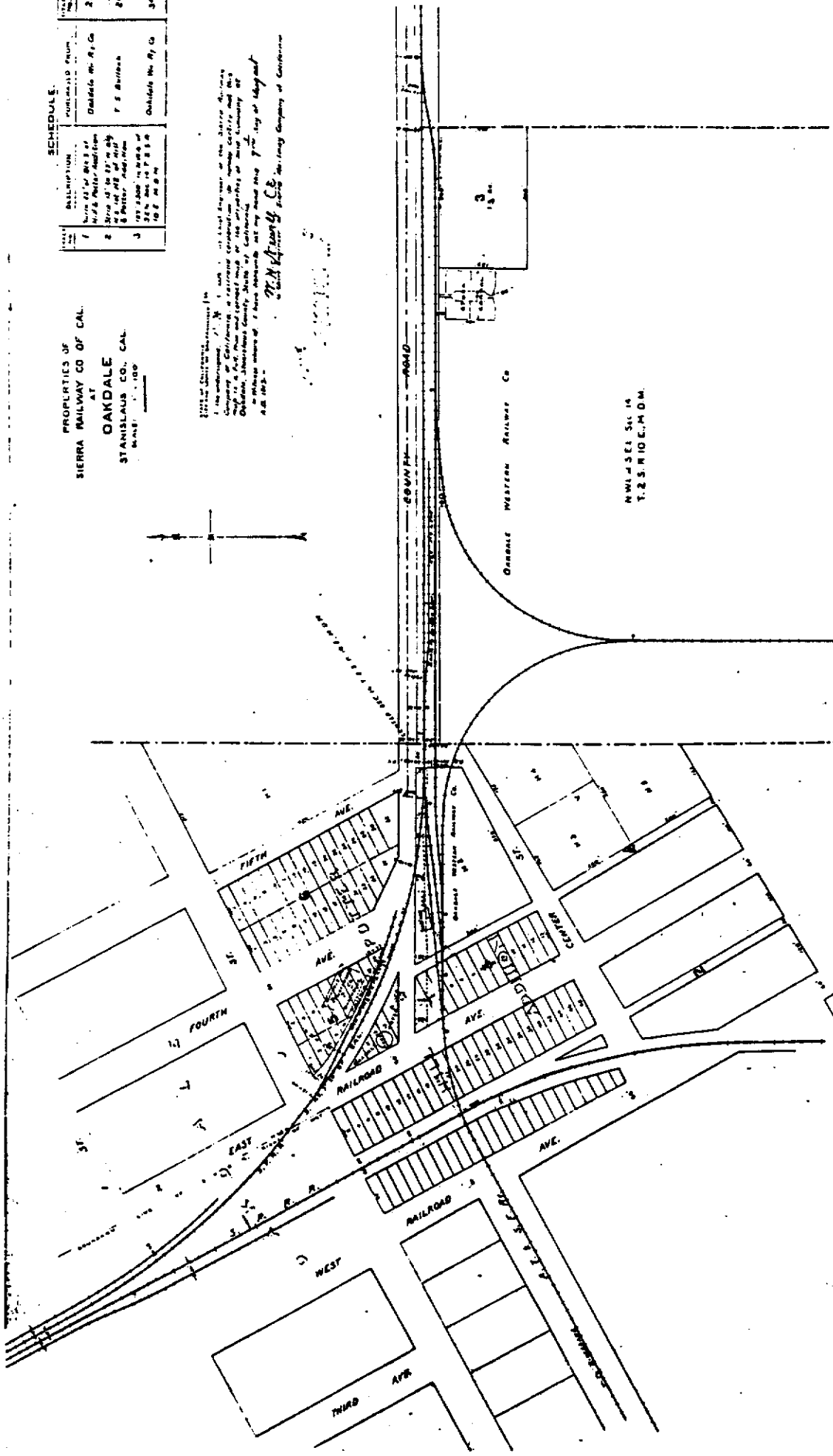
NO.	DESCRIPTION	QUANTITY	UNIT
1	Three 12" dia. 20' long No. 1000 Diaphragm	3	ea.
2	Three 12" dia. 20' long No. 1000 Diaphragm	3	ea.
3	Three 12" dia. 20' long No. 1000 Diaphragm	3	ea.

PROPERTIES OF  
SIERRA RAILWAY CO OF CAL.  
AT  
**OAKDALE**  
STANISLAUS CO., CAL.  
MAP NO. 100

STANISLAUS COUNTY, CALIFORNIA

1. The undersigned, J. M. ... of the State of California, do hereby certify that the above described property is the property of the Sierra Railway Company of California, as shown on the map of the same filed in the office of the County Clerk of Stanislaus County, California, on the 10th day of August, A.D. 1905.

*J. M. ...*  
J. M. ...  
J. M. ...



MAP NO. 100  
T. S. NIOCE, P. O. M.